

Cut Server

Using CUT-Server

What is CUT-Server?

CUT-Server is an ONYX application that sends cut information to your specific cutter. RIP-Queue creates the cut information for the CUT-Server from the cut path you defined in your graphics application.

How do I use CUT-Server?

CUT-Server only works with the specific cutters listed in the Placement Strategy dialog in RIP-Queue; however, there is also a Generic Cutter option which works with most cutting devices.

Configuring CUT-Server

Once you've run the executable to install the new application, launch the CUT-Server by double-clicking the icon on your desktop or selecting **CUT-Server** from the Start menu. The first time you start the application, CUT-Server displays the Add Cutter dialog (see Figure 8).

For optimal performance, we recommend that you run AutoUpdate for the latest revision of the CUT-Server software.

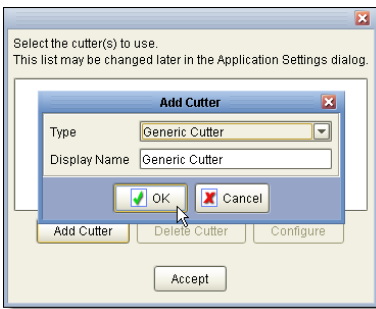


Figure 8—Add Cutter

➔ To add a cutter

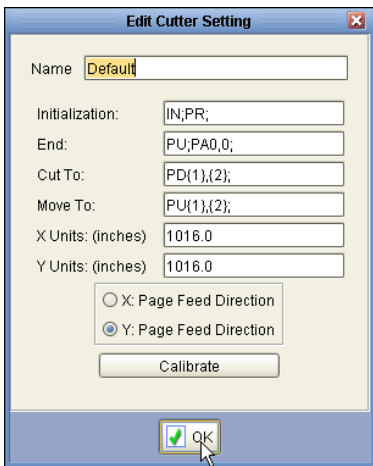


Figure 9—Edit Cutter Settings

1. In the Add Cutter dialog, click **Add Cutter**.
2. Use the Cutter Type drop-down menu to select the desired cutter, then click **OK**.
3. Highlight the device, and click **Configure**.
4. In Port Settings, use the drop-down menu to select the port type. Click **Setup** to open the Port Configuration dialog.
5. Use the Port Configuration dialog to setup your specific device.
6. In the Device Settings area, select the Default cut setting, and click **Configure**. This opens the Edit Cutter Settings dialog (see Figure 9). These settings are the cutting equivalent to Quick Sets.
7. The Edit Cutter Settings dialog shows the current default settings. The Cutter Settings dialog for a specific cutter displays the setting name, knife pressure, and cut velocity. The Cutter Settings dialog for a generic cutter displays common HP-GL/2 commands to drive a variety of cutters. If you know the specific commands unique to your cutter, you can modify the settings here.
8. Click **OK**.
9. Click **Close**.

If you need to add a new cutter or manage your existing cutter, select **Application Settings** on the tool bar and then the **Cutters** icon. In the Device Management dialog you can Add, Delete, and Configure cutters. The first time you use the generic cutter, you must calibrate your specific cutter to recognize the generic cutter alignment marks on your image.

Workflow Options for Adding Cut Files

There are several workflow options for adding cut files to the job list. When you add a cut file using any of these methods, the file will display under the correct device heading. If you add a cut file for a cutter that's not configured, you will be prompted with a message to add that specific cutter. Cut jobs will display in the job list for the intended cutter.

Cutter Hot Folder

This is the most common workflow. Once RIP-Queue processes the image, it creates the cut file and stores it in the Hot Folder for that cutter. CUT-Server recognizes cutter Hot Folders automatically so the job displays in the CUT-Server job list.

Opening Cut Files Manually

To open a cut file manually, click **Open** from the tool bar and browse to the cut file. The recognized file extension for cut files is .xml.

Scanning a Bar Code

To add a cut file using a bar code reader, click **Scan a Bar Code** from the tool bar and scan the bar code or type in the number of the bar code located on the print.

Drag and Drop

You can drag and drop cut files into CUT-Server. To do this, select the file and drag and drop the file into the application.

Custom Hot Folder

You can configure custom Hot Folders for CUT-Server to recognize a network folder or another known location. To do this, click **Application Settings** on the main toolbar. Click **Jobs > Add** and browse from the Application Settings dialog.

Archive

To open a job from a previously archived file, click **Archive** from the

tool bar, highlight the file, and click **Restore**. This moves the job from the Archive into the job list for the intended cutter.

Cutting Workflow

Once you have installed the cutter, you can add you cut files to the job list.

➔To send a cut job to the cutter:

1. In the CUT-Server window, highlight the desired cut job from the job list to display the cut paths in the preview area.
2. If you want to change the rotation or apply a different cutter setting, use the mini-arrow in the right-hand corner of the cutter heading. This expands and contracts the rotation and cutter setting options. Use the drop-down arrows to make your selection (see Figure 10).
3. If you want to inspect your cut paths, use the zoom and pan tools. To reset the preview, use the zoom drop-down, and select **Fit to Window**.
4. Load the print into the cutter. If you've made a change to the rotation, check the preview area to verify the correct orientation.
5. Click **Cut Now**.

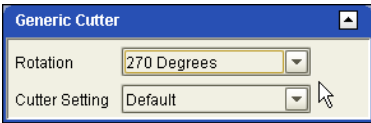


Figure 10—Cutter Settings

Application Settings

The Application Settings dialog controls the general appearance of the program as well as device and job settings (see Figure 11). You can access the dialog using the Application Settings icon on the tool bar of the main window.

Changing the Appearance

Appearance is the first dialog displayed in Application Settings (see Figure 11). Use these settings to change the general appearance of the program.

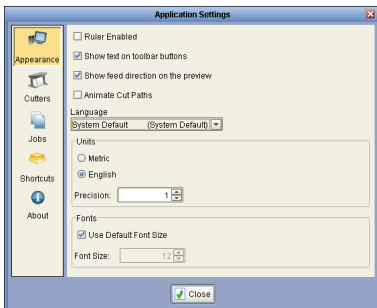


Figure 11—Application Settings

- **Ruler Enabled**—this option displays rulers along the top and left side of the preview screen.
- **Show text on toolbar buttons**—this option displays text under the tool bar icons.
- **Show feed direction on the preview**—this option displays feed direction arrows above the preview screen. If you rotate cut jobs, this indicates the media orientation.
- **Animate Cut Path**—this option displays cut paths as an animated dashed line.
- **Language**—this option displays the current language for the user

interface. Use the drop-down menu to select your desired language. You will be prompted to restart the program for the changes to take effect.

- **Units**—this option displays the units of measurements.
- **Fonts**—this option displays the font size for the user interface. Font size does not control fonts in the image.

Managing Cutters

Select the Cutters icon on the left side of the Application Settings dialog to display the cutter window (see Figure 12). Use the Cutter settings to manage your devices.

The Device Management section of the Cutters window displays a list of current devices.

- **Add Cutter**—to add a new cutter, click the **Add** button.
- **Delete Cutter**—to delete a cutter from the list, highlight the device, and click **Delete**.
- **Configure Cutter**—to configure a cutter from the list, highlight the device, and click **Configure**.

The Application Settings section of the Cutters window displays a checkbox for Sort CutPaths.

- **Sort Cut Paths**—this is checked by default and improves cut accuracy and efficiency by sorting cut paths in a logical manner to reduce media feed adjustment while cutting.

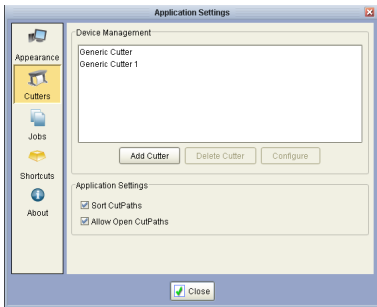


Figure 12—Cutters

Managing Jobs

Select the Jobs icon on the left side of the Application Settings dialog to open the Job options (see Figure 13). Use these settings to configure Archive Options and Hot Folders.

The radio button controls how jobs are handled after cutting.

- **Don't do anything with jobs after cutting**—this option leaves the job in the job list until you manually delete the file. You can manually delete files from the job list by highlighting the job, and then either selecting **Delete** from the right-click menu or the **Delete icon** located on the tool bar.
- **Archive jobs after cutting**—this automatically moves jobs to the Archive list. You can manually archive jobs from the job list by highlighting the job, and selecting **Archive** from the right-click menu. Restore or delete archived jobs using the Archive icon on the tool bar.

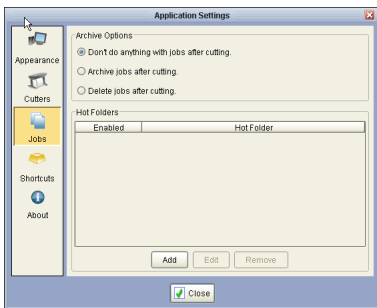


Figure 13—Jobs

- **Delete jobs after cutting**—this deletes the job from the list after cutting.

CUT-Server automatically recognizes ONYX Hot Folders and displays cut files in the job list for the intended cutter. CUT-Server displays a list of custom Hot Folders from the network or a different known location. Use the checkbox to enable active Hot Folders.

- **Add**—if you want to add a custom Hot Folder, click **Add** and browse to the location. You can add an unlimited number of Hot Folders and any cut jobs in the defined Hot Folders will display in the job list.
- **Edit**—if you want to edit a Hot Folder from the list, highlight the entry, and click **Edit**. This allows you to browse to a new location.
- **Remove**—if you want to remove a Hot Folder from the list, highlight the entry, and click **Remove**.

Viewing Shortcuts

Select the Shortcuts icon on the left side of the Application Settings dialog to view the Shortcut Key Strokes (see Figure 14). These are only for display and are not editable.

Viewing About

Select the About icon on the left side of the Application Settings dialog to view the CUT-Server information.

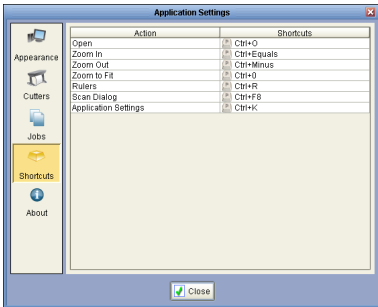


Figure 14—Shortcut Keys